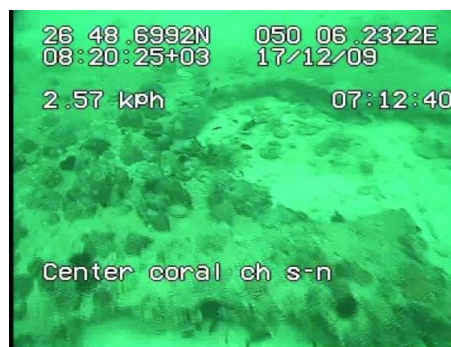


Client

Saudi Aramco and DOW Chemical Company

Project

The proposed project consisted of a 13km shipping channel and harbour to be constructed for a US\$28B petrochemical facility. The channel would pass through an area of caprock ridges supporting important coral communities and associated reef biota including commercially important fish species. Saudi Aramco and DOW commissioned site surveys and a mitigation plan to reduce and compensate for impacts resulting from the dredge works. Mitigation strategies included relocation of high priority coral species, construction of compensatory artificial reefs, innovative dredging options, and enhancement of rock seawalls and design of silt curtain configurations to reduce sediment loading on key habitats.



Services Provided

- Data review and construction of model to determine extent of impacts
- Site surveys to confirm coral species, size, abundance, suitability for relocation, ecological value, imperilled and threatened boundaries, suitable relocation site
- Mobilisation of equipment and international team
- All in-country logistics
- Comprehensive mitigation plan with options ranked with regard to cost, benefits, likely success, timescale, availability of resources and practicality
- Artificial reef designs to compensate for ecological services lost
- Silt curtain design (including costings) to reduce extent of dredge plume and impact on coral

Benefits to the Client

- ✓ Independent advice as to practicality of EIS recommendations
- ✓ 6 mitigation options clearly defined and ranked
- ✓ Estimated budgets to factor into Stage 2 financials
- ✓ The whole project was successfully conducted with minimal input required from the client except for visa applications.

Further information: David Lennon, +61 (0)400 520 471
dlennon@reefballaustralia.com.au